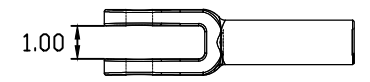
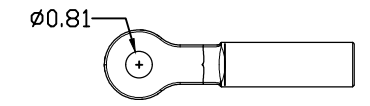
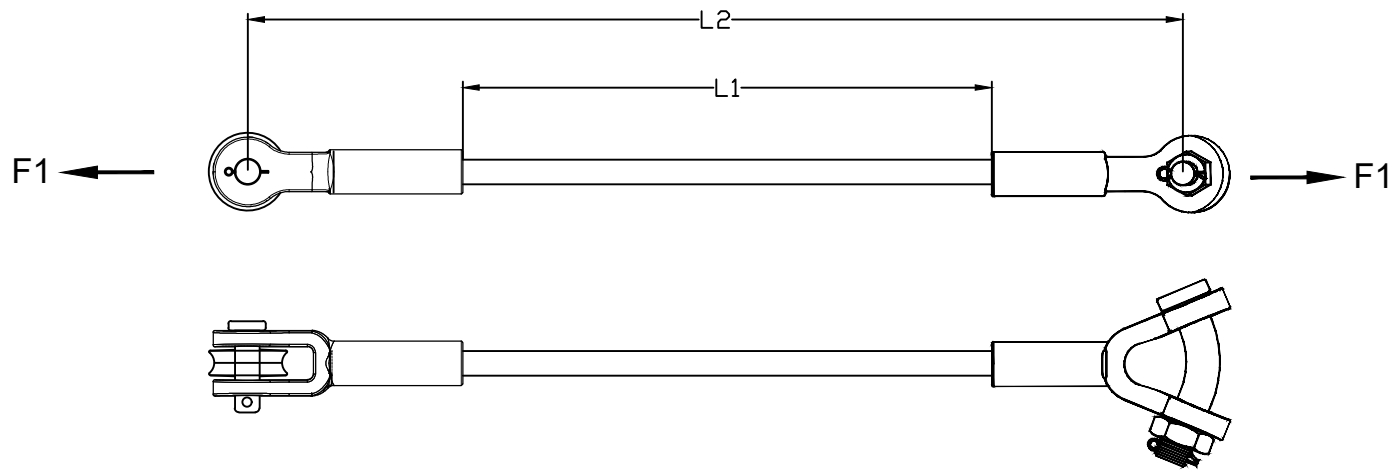
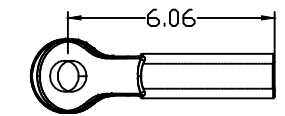
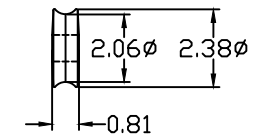
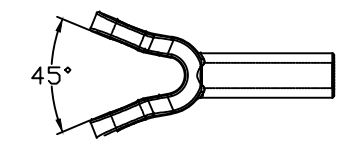
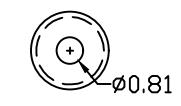


REVISIONS				
NO.	DATE	DESCRIPTION	BY	CKD
1	11/03/20	ADDED SUFFIX SC	BHB	



CLEVIS VIEW



ROLLER VIEW
(OPTIONAL - ADD "R" SUFFIX)

Y-CLEVIS VIEW

CATALOG NUMBER		LENGTHS (IN)		ULTIMATE STRENGTHS	ELECTRICAL FLASHOVER	
NO ROLLER	WITH ROLLER	L1	L2	TENSILE, LBS (F1)	DRY, kV	WET, kV
GYCC30-12	GYCC30-12R	12	24.563	30,000	90	45
GYCC30-18	GYCC30-18R	18	30.563	30,000	135	67.5
GYCC30-24	GYCC30-24R	24	36.563	30,000	180	90
GYCC30-30	GYCC30-30R	30	42.563	30,000	225	112.5
GYCC30-36	GYCC30-36R	36	48.563	30,000	270	135
GYCC30-42	GYCC30-42R	42	54.563	30,000	315	157.5
GYCC30-48	GYCC30-48R	48	60.563	30,000	360	180
GYCC30-54	GYCC30-54R	54	66.563	30,000	405	202.5
GYCC30-60	GYCC30-60R	60	72.563	30,000	450	225
GYCC30-78	GYCC30-78R	78	90.563	30,000	585	292.5
GYCC30-96	GYCC30-96R	96	108.563	30,000	720	360
GYCC30-108	GYCC30-108R	108	120.563	30,000	810	405
GYCC30-120	GYCC30-120R	120	132.563	30,000	900	450
GYCC30-144	GYCC30-144R	144	156.563	30,000	1080	540

NOTES:

- 1.0 MATERIAL
 - 1.1 END FITTING - DUCTILE IRON 654512
 - 1.2 ROD - FIBERGLASS
 - 1.3 CLEVIS PIN - STEEL (EQUIVALENT TO SAE GRADE 5)
 - 1.4 COTTER KEY - STAINLESS STEEL
- 2.0 FINISH
 - 2.1 END FITTING - HOT DIP GALVANIZED PER ASTM-A-153
 - 2.2 ROD - ULTRAVIOLET PROTECTIVE VEIL COATING, GRAY
 - 2.3 CLEVIS PIN - HOT DIP GALVANIZED PER ASTM-A-153
 - 2.4 COTTER KEY - NONE
- 3.0 DIMENSIONS IN INCHES

NOTE: ADDED SUFFIX "SC" INDICATES SILICONE COATED RUBBER FIBERGLASS ROD.
EX. GYCC30-12RSC FOR ONE ROLLER AND SILICONE COATED ROD.

This information is confidential and is the property of Maclean Power Systems. It may not be made public or reproduced except that the Customer may make copies for use solely in installation, maintenance, and operation of products supplied by Maclean Power Systems.

MACLEAN POWER SYSTEMS
A Maclean-fogg Company

GYCC30-"L1" & GYCC30-"L1"-R SERIES
30K GUY STRAIN INSULATOR
Y-CLEVIS END FITTING, CLEVIS END FITTING

DATE: 12/15/11 SCALE: NA NO. CEB-3849

DWN. BY: KK CKD. BY: APR. BY: R/1 SH. BY: